

STAR WARS™
BUILD THE
**MILLENNIUM
FALCON**

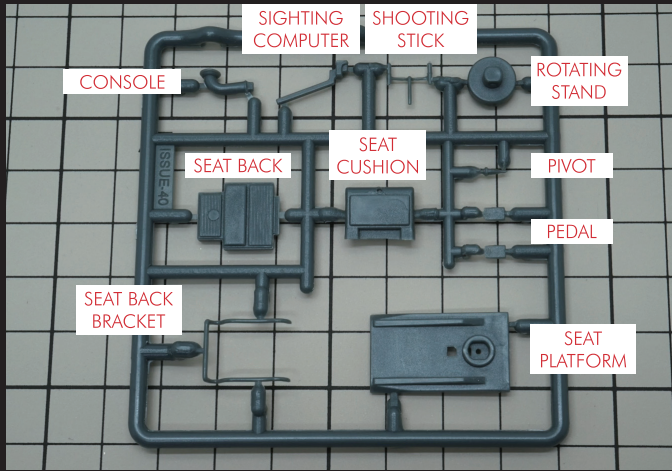
PACK 9 - THE ENGINE DIFFUSER, DORSAL GUN WELL AND LANDING LEGS
ASSEMBLY INSTRUCTIONS

 **STKWORKSHOP**

DeAGOSTINI

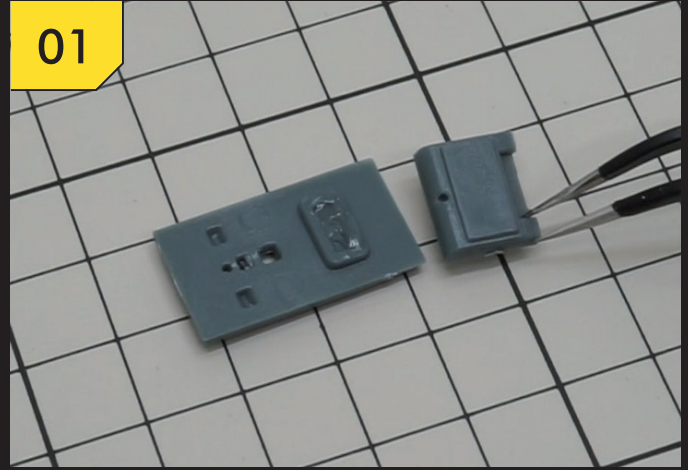
ASSEMBLY INSTRUCTIONS - 1

CONSOLE OF THE CANNON ASSEMBLY



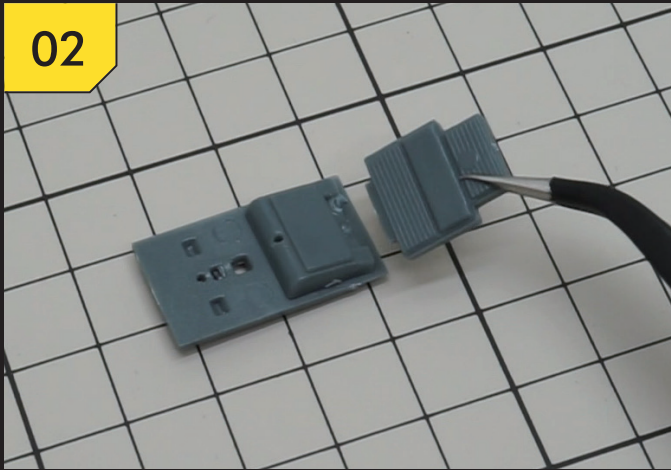
Some Parts in the frame are very tiny. Be careful not to damage them when snipping them off from the frame.

01



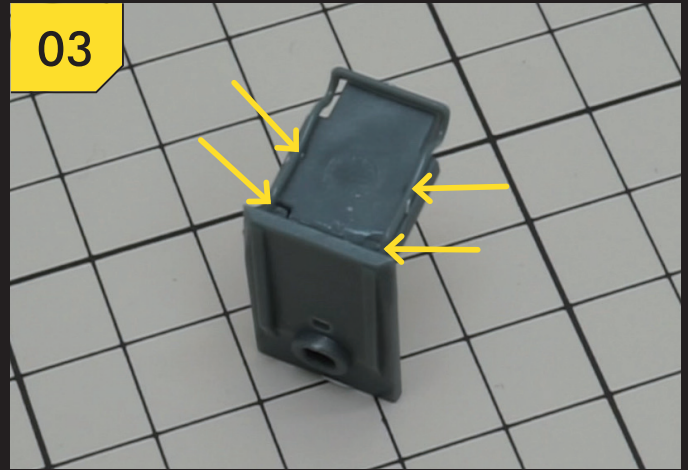
STEP 1:
Please refer to the picture to identify the correct direction and secure the Seat Cushion to the rectangular tenon on the Seat Platform.

02



STEP 2:
Secure the Seat Back to the back of the Seat Cushion and refer to the picture on the top right to identify the tilting angles of the two.

03



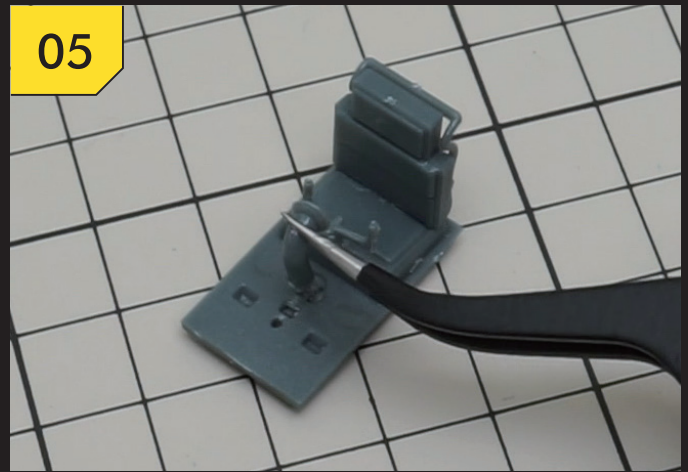
STEP 3:
Secure the Seat Back Bracket to the two small holes on the Seat Back (as indicated by the yellow arrows) and the two small holes on the Seat Cushion (as indicated by the yellow arrows).

04



STEP 4:
Use tweezers to secure the Shooting Stick to the small hole in front of the Seat.

05

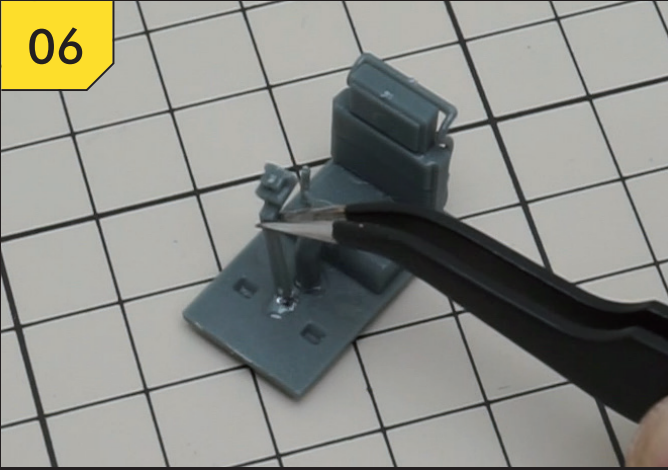


STEP 5:
Secure the Console to the front of the Shooting Stick and check if the Shooting Stick and the Console are assembled together.

ASSEMBLY INSTRUCTIONS - 1

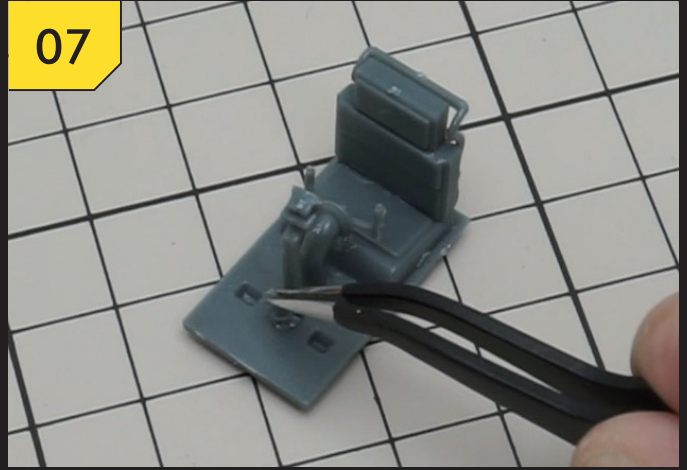
CONSOLE OF THE CANNON ASSEMBLY

06



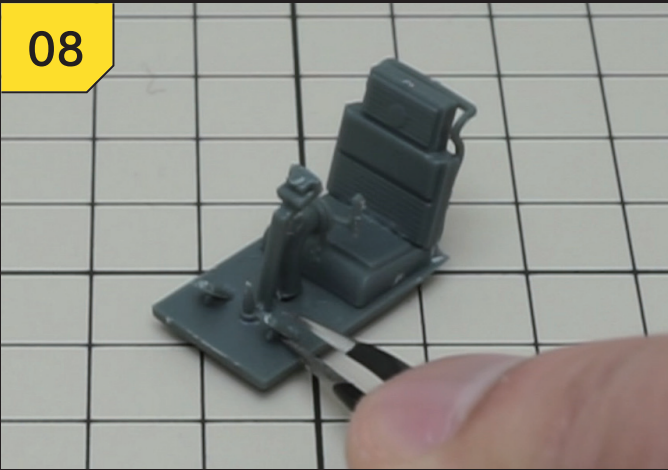
STEP 6:
Next, secure the Sighting Computer to the front of the Console.

07



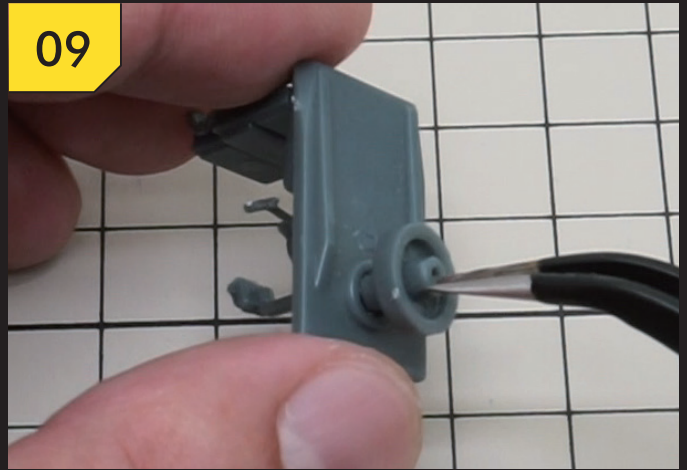
STEP 7:
Continue to secure the Pivot to the front of the Sighting Computer.

08



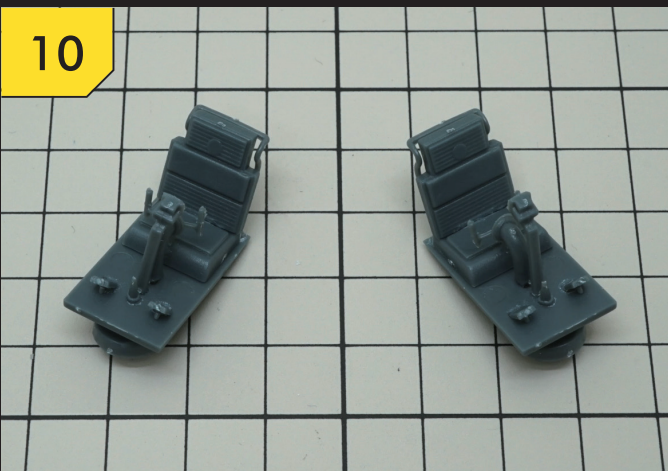
STEP 8:
Secure the Pedals to both sides of the Pivot.

09



STEP 9:
Secure the cylindrical protrusion of the Rotating Stand to the small cylindrical hole below the Seat Platform according to their shapes.

10

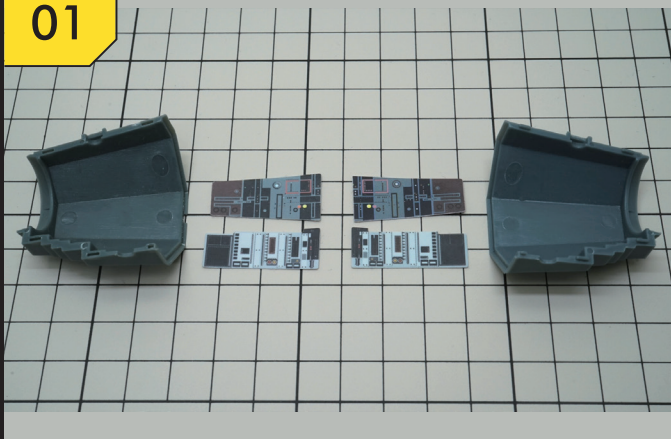


STEP 10:
Repeat the previous Steps to assemble the second Console of the Cannon and complete the assembly as shown in the picture.

ASSEMBLY INSTRUCTIONS - 1

TURRET BAY ASSEMBLY

01



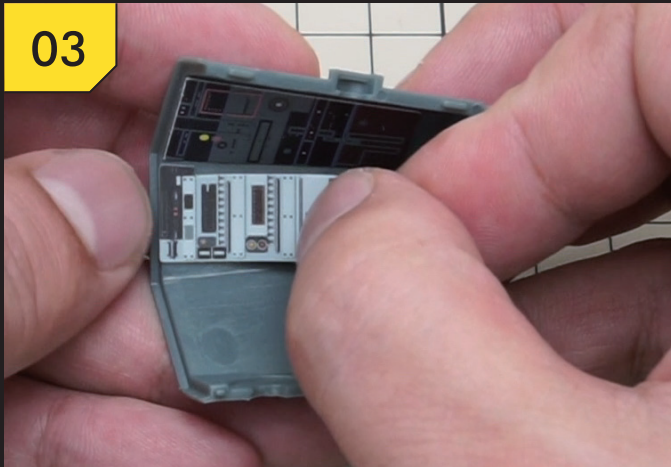
STEP 1:
Place the Stickers as shown in the picture, identify their sticking positions and carefully remove their backing papers.

02



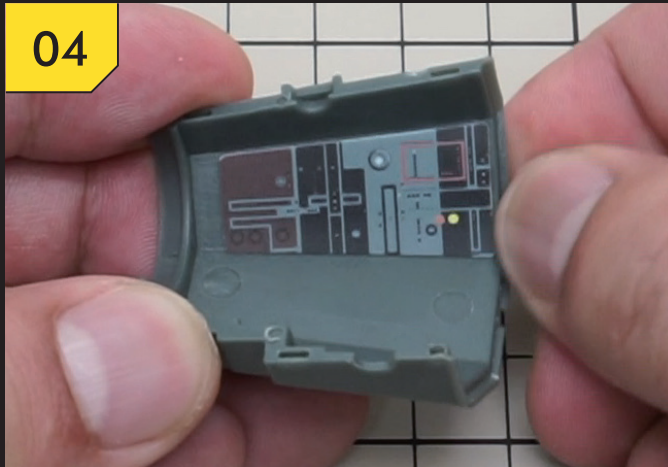
STEP 2:
Paste the Dashboard Sticker (upper right) to the upper part of the Turret Bay (right) as shown in the picture, with the edge of the Sticker matching the edge of the Part.

03



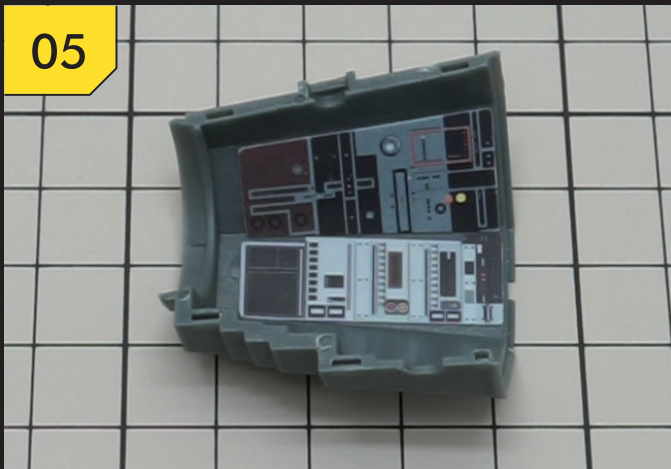
STEP 3:
Paste the Dashboard Sticker (bottom right) to the upper part of the Turret Bay (right) as shown in the picture, with the edge of the Sticker matching the edge of the Part.

04



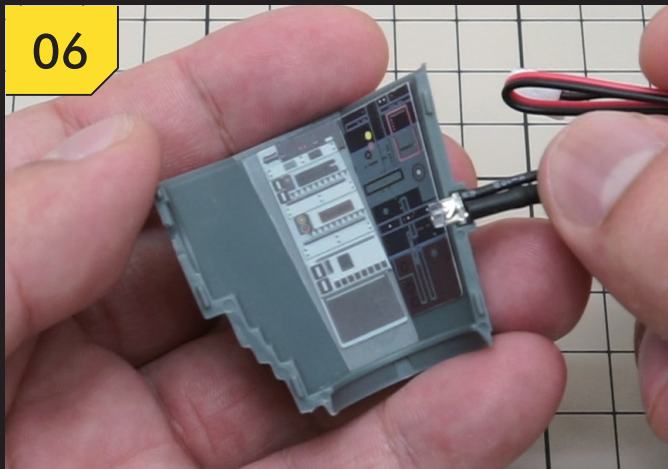
STEP 4:
Paste the Dashboard Sticker (upper left) to the upper part of the Turret Bay (left) as shown in the picture.

05



STEP 5:
Paste the Dashboard Sticker (bottom left) to the upper part of the Turret Bay (left) as shown in the picture.

06

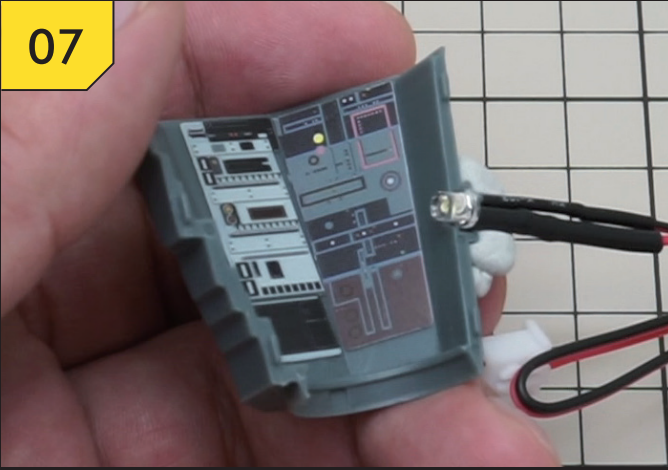


STEP 6:
Carefully assemble the Turret LED Light into the groove of the upper part of the Turret Bay (right).

ASSEMBLY INSTRUCTIONS - 1

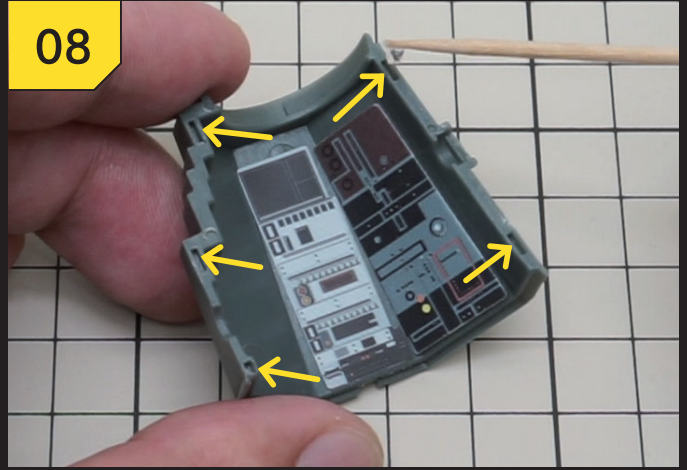
TURRET BAY ASSEMBLY

07



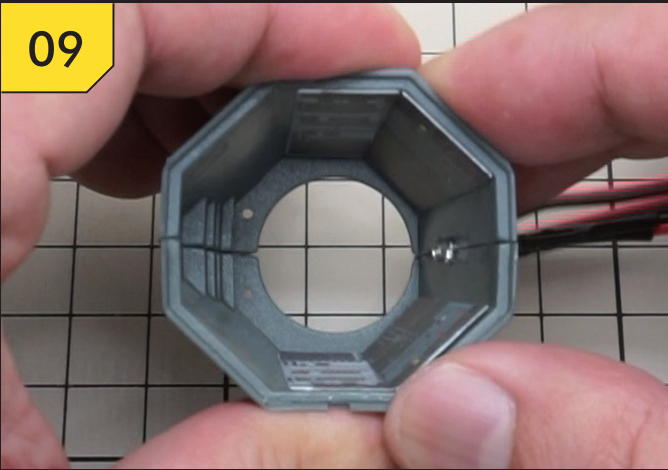
STEP 7:
Keep the two electric wires parallel to the groove and make sure the flange of the Turret LED Light is secured in the groove.

08



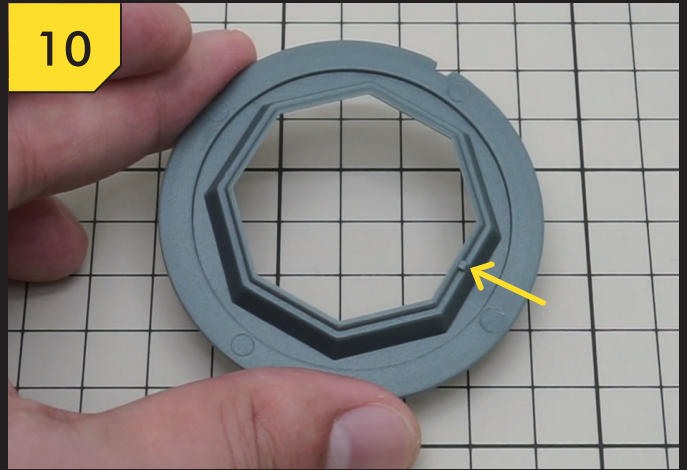
STEP 8:
Apply a small amount of adhesive to the five locations where grooves are secured (as indicated by the yellow arrows).

09



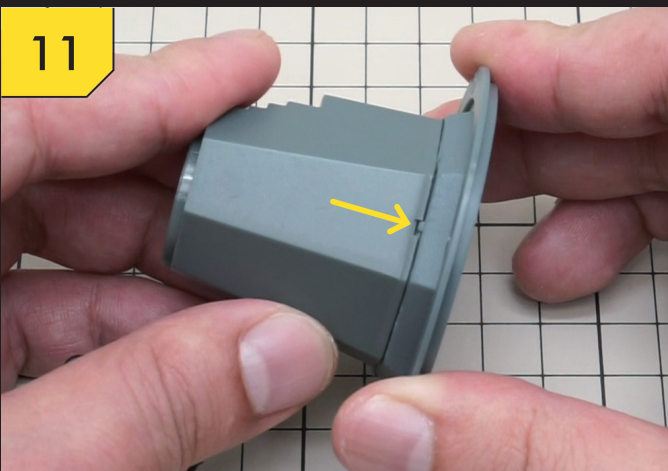
STEP 9:
Secure the upper part of the Turret Bay (right) and the top upper part of the Turret Bay (left). Identify the position of the Turret LED from the picture.

10



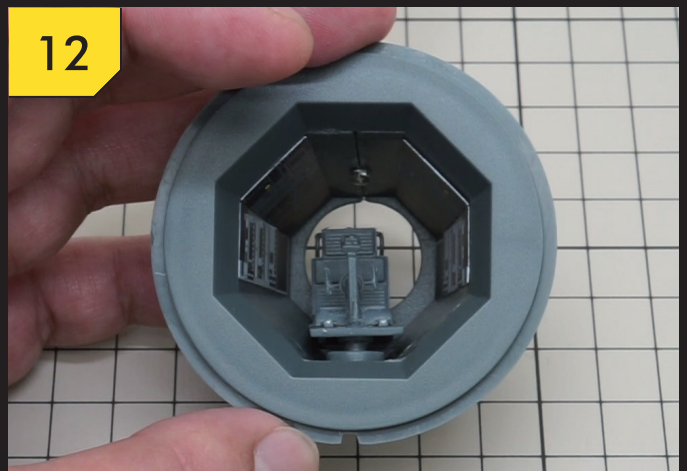
STEP 10:
Go on to identify the positioning tenon on the ring of the upper part of the Turret Bay (as indicated by the yellow arrow).

11



STEP 11:
Apply a small amount of adhesive to the flange of the ring of the top upper part of the Turret Bay and align the positioning tenon with the coupling hole securing the Turret Bay (as indicated by the yellow arrow).

12

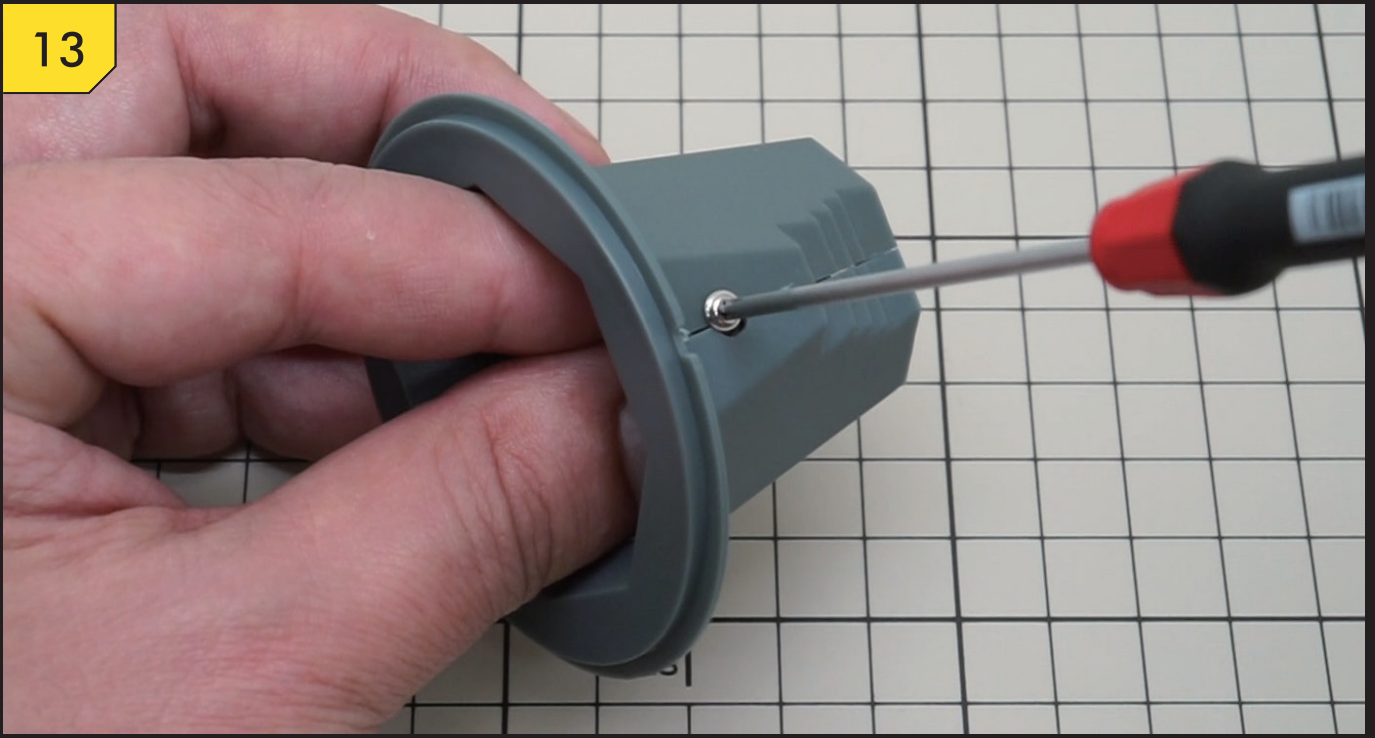


STEP 12:
Console and Rotating Stand assembly complete as shown in the picture.

ASSEMBLY INSTRUCTIONS - 1

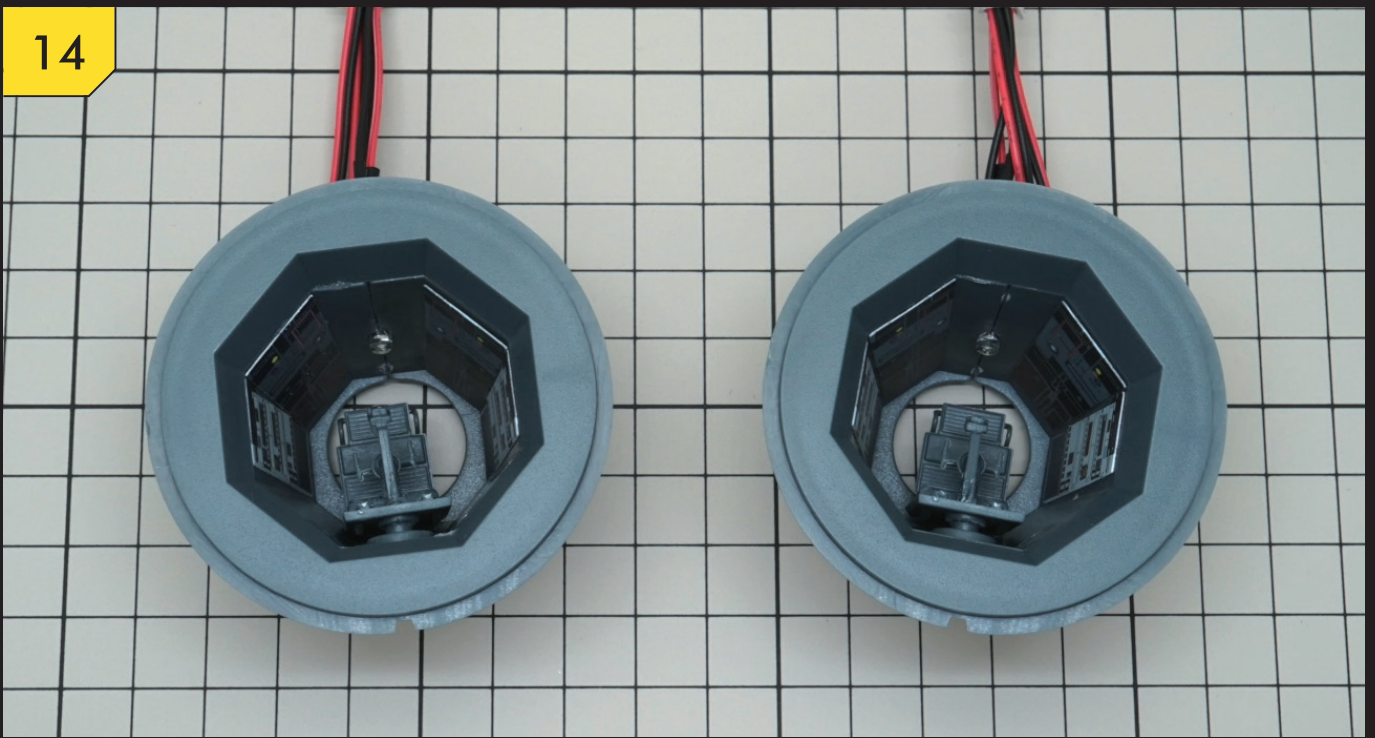
TURRET BAY ASSEMBLY

13



STEP 13:
Secure the Console with a 1.7x3mm cap head self-tapping screw.

14

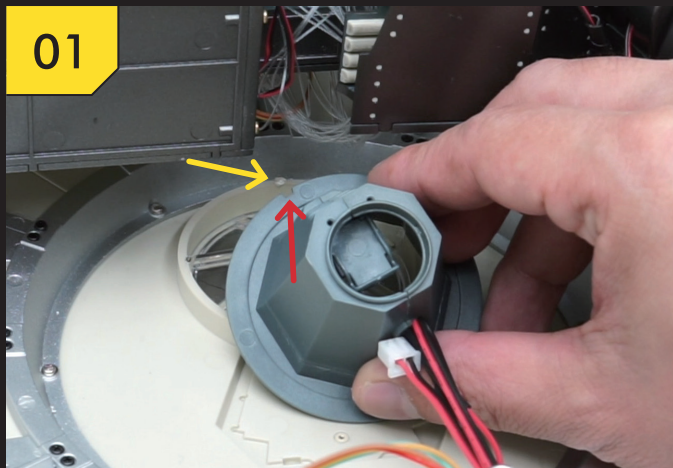


STEP 14:
Assemble the lower part of the Turret Bay in the same manner.

ASSEMBLY INSTRUCTIONS - 1

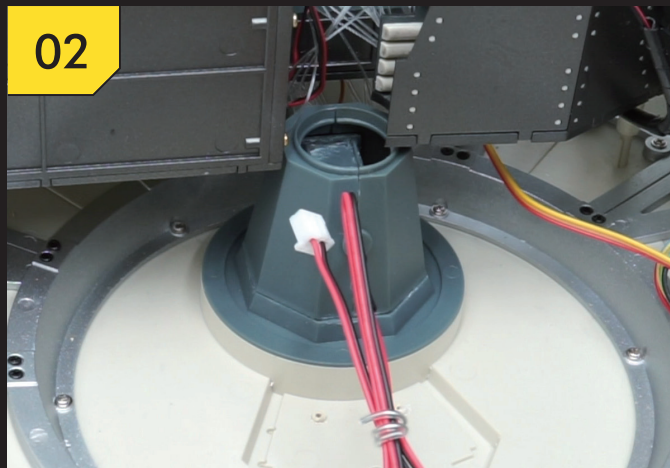
LOWER TURRET BAY ASSEMBLY

01



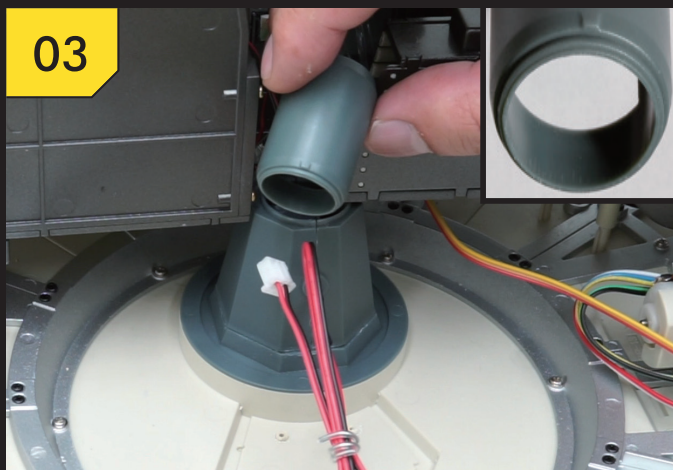
STEP 1:
Align the notch of the Lower Turret Bay (as indicated by the red arrow) with the tenon of the lower part of the Central Turret (as indicated by the yellow arrow).

02



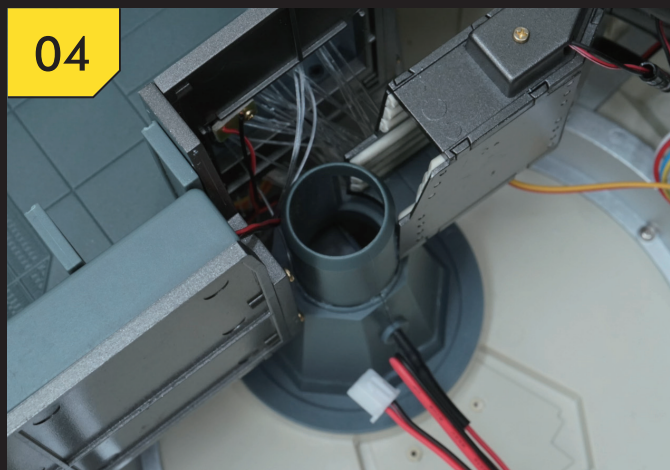
STEP 2:
Use a small amount of glue to secure the Lower Turret Bay onto the Lower Cannon Base.

03



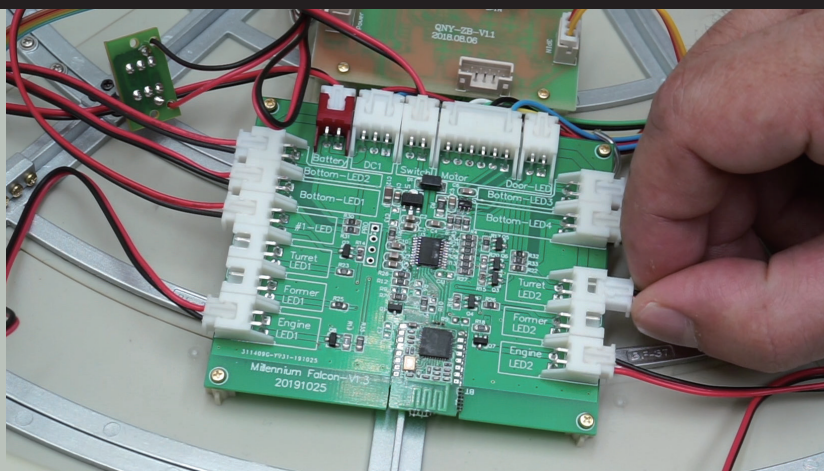
STEP 3:
Hold the Turret Tunnel next to the internal small Parts assembled in Step 2 as shown in the picture. The segmented flange at the lower end of the Turret Tunnel (refer to the picture on the top right) has a positioning claw.

04



STEP 4:
Secure the flange of the Turret Tunnel onto the Turret Bay, with the square opening of the Turret Tunnel facing the direction where the Tunnel is connected.

05

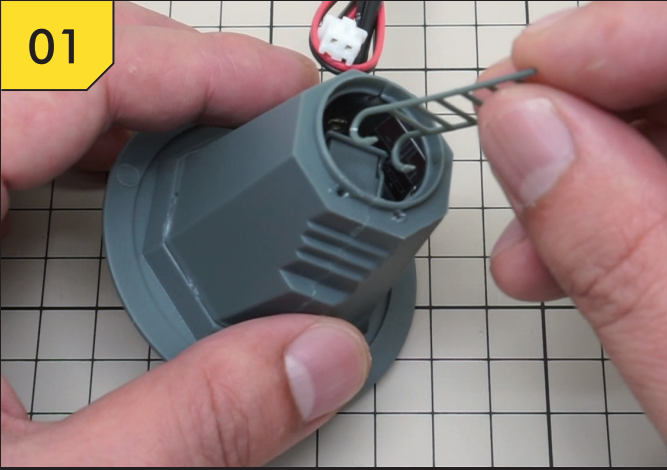


STEP 5:
Insert the 2-pin plug of the LED light of the Lower Cannon Base into the Turret LED2 Socket of the Control Circuit Board.

ASSEMBLY INSTRUCTIONS - 1

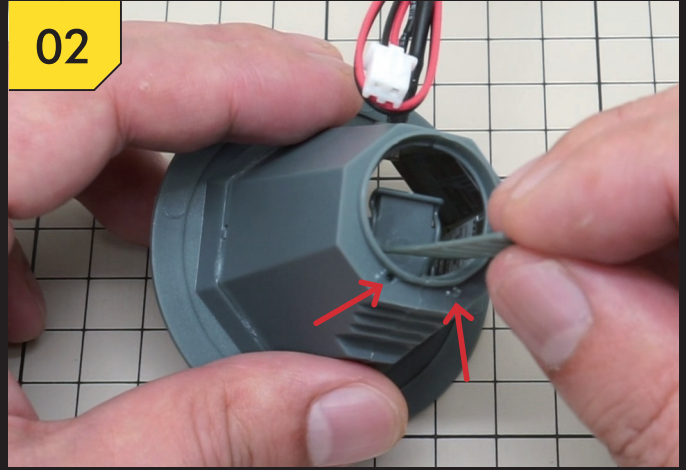
UPPER TURRET BAY ASSEMBLY

01



STEP 1:
Insert the hook-shaped ends of the Ladder into the Upper Turret Bay as shown in the picture.

02



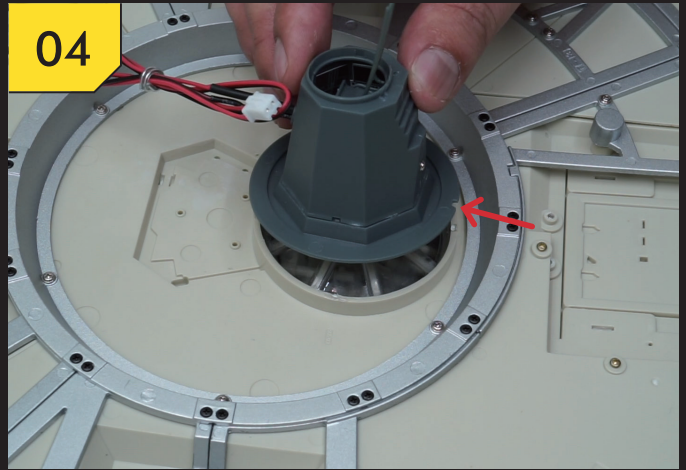
STEP 2:
Insert the two ends of the Ladder from the inner side and secure them into the two small holes around the opening (as indicated by the red arrows).

03



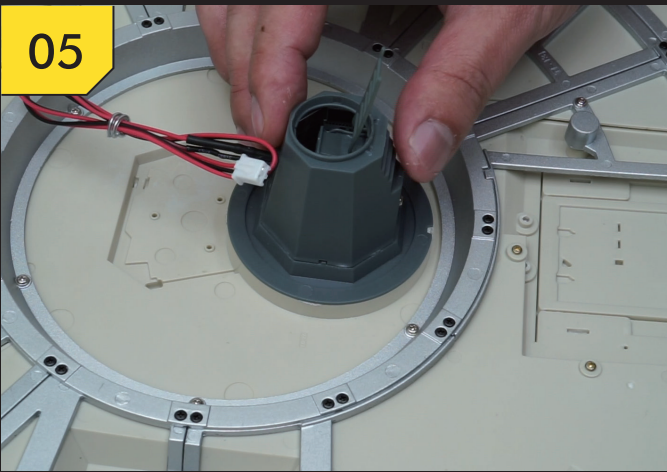
STEP 3:
Assemble the Upper Turret Bay connecting the Ladder. The Ladder is perpendicularly assembled.

04



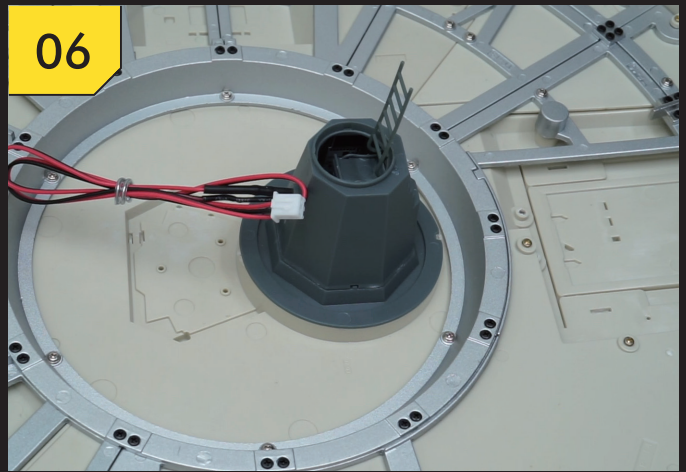
STEP 4:
Prepare to assemble the Upper Turret Bay onto the Turret Window. Align the notch identified as the assembly position (as indicated by the red arrow).

05



STEP 5:
Secure the Upper Turret Bay onto the Upper Central Turret Base.

06

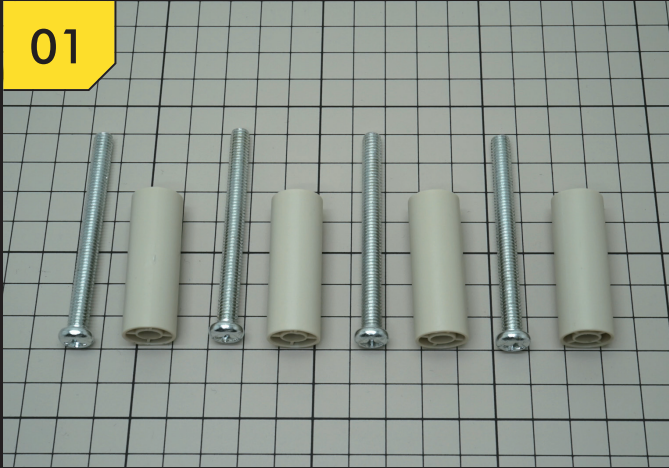


STEP 6:
This picture shows the Upper Central Turret Base assembled with the Upper Turret Bay.

ASSEMBLY INSTRUCTIONS - 2

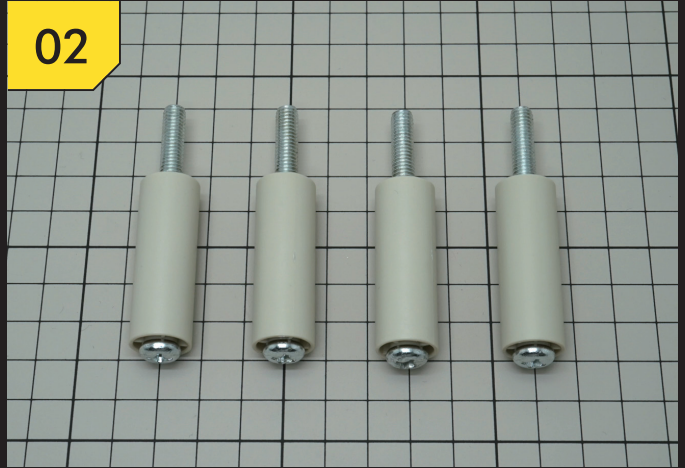
BOLTS AND BOLT SLEEVES ASSEMBLY

01



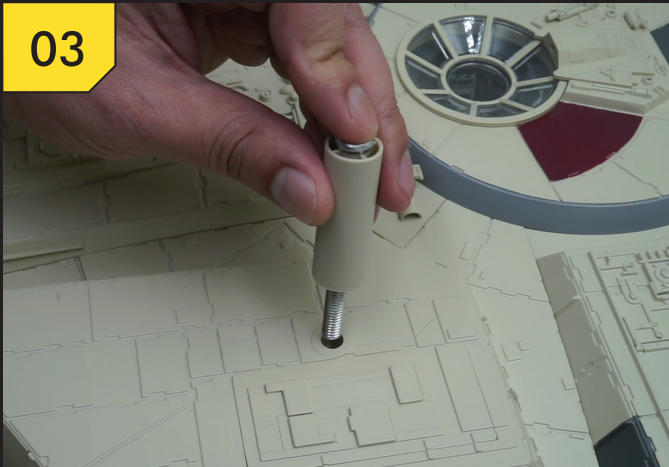
STEP 1:
Prepare four Bolts of M6X65 and four Bolt Sleeves.

02



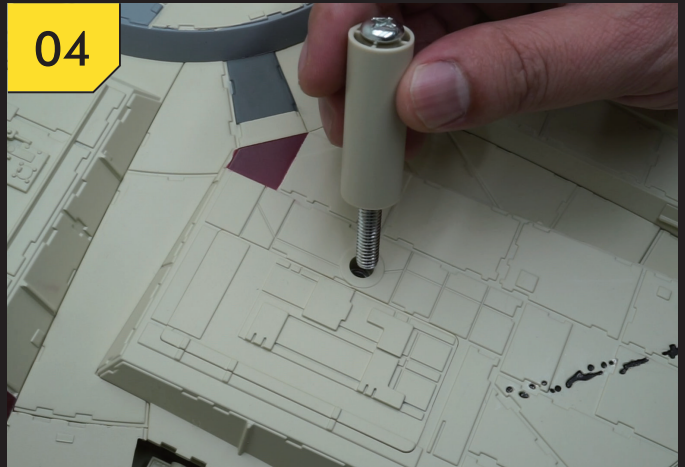
STEP 2:
Sleeve the Bolts with Bolt Sleeves.

03



STEP 3:
Screw a sleeved Bolt into the hole of the Armor-Plated Exterior of the Undercarriage at the left front side of the Millennium Falcon.

04



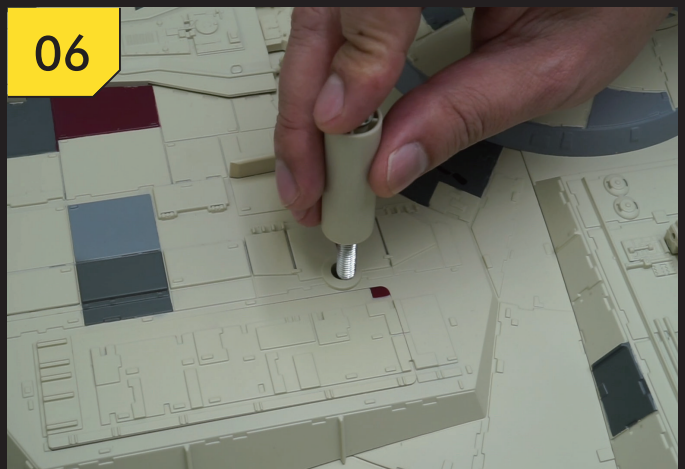
STEP 4:
Screw a sleeved Bolt into the hole of the Armor-Plated Exterior of the Undercarriage at the right front side of the Millennium Falcon.

05



STEP 5:
Screw a sleeved Bolt into the hole of the Armor-Plated Exterior of the Undercarriage at the rear left side of the Millennium Falcon.

06

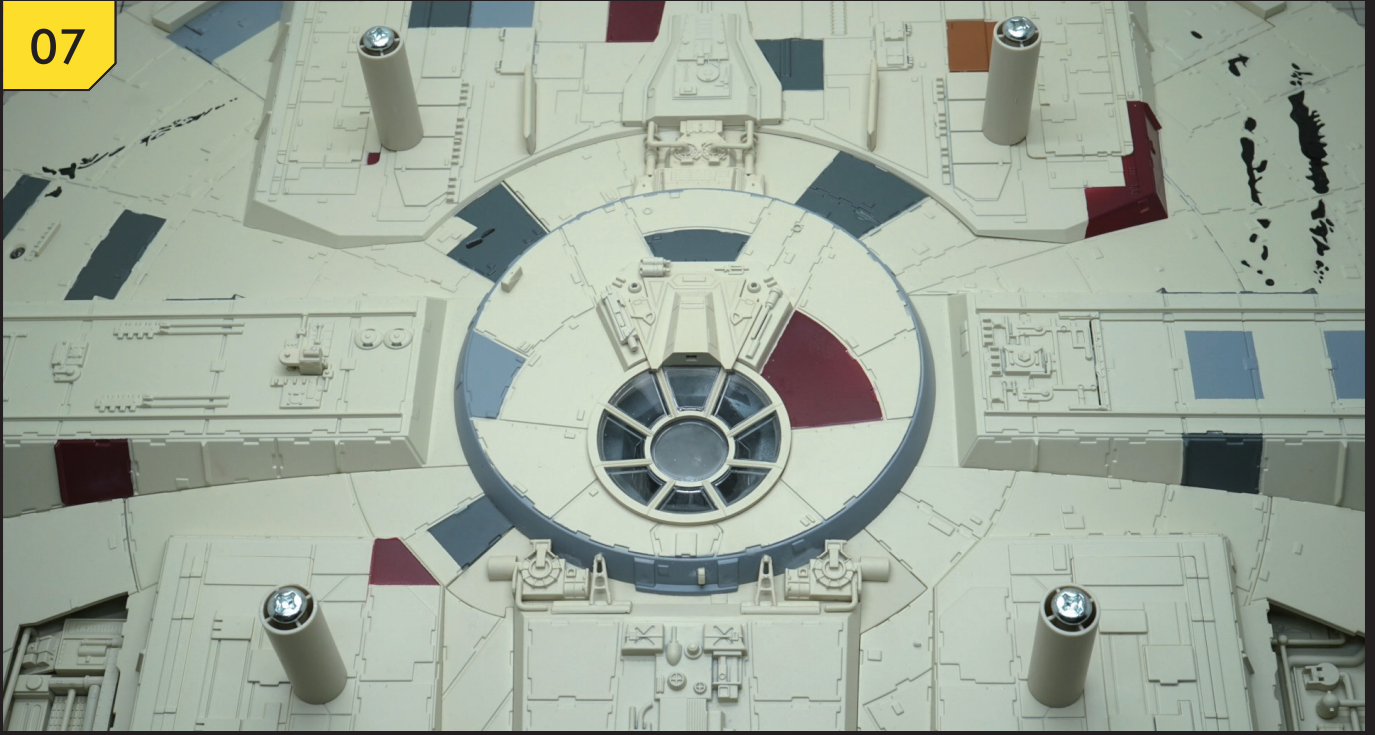


STEP 6:
Screw a sleeved Bolt into the hole of the Armor-Plated Exterior of the Undercarriage at the rear right side of the Millennium Falcon.

ASSEMBLY INSTRUCTIONS - 2

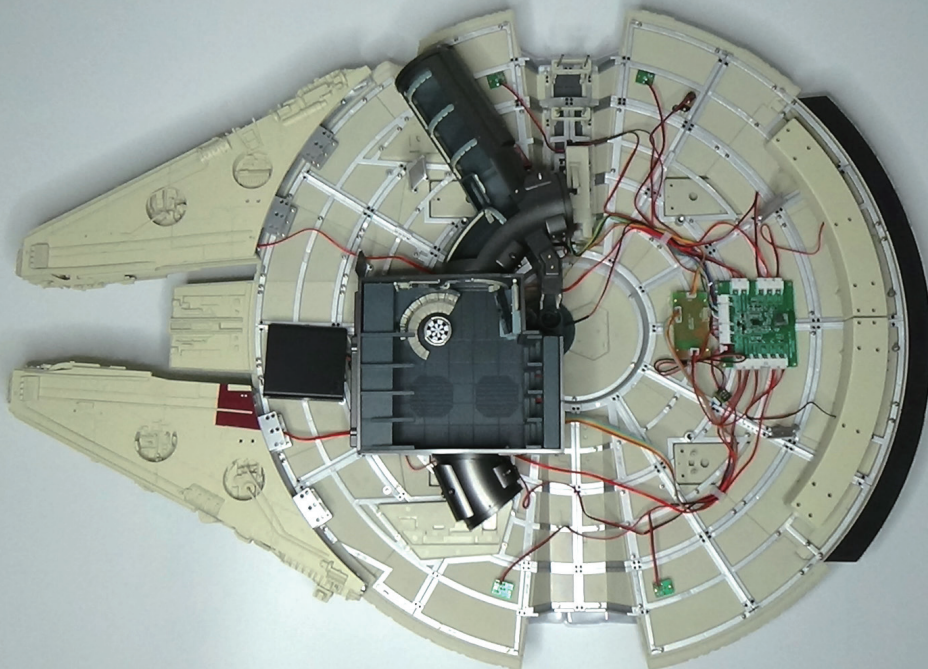
BOLTS AND BOLT SLEEVES ASSEMBLY

07



STEP 7:
Four Bolts are assembled as shown in the picture.

08

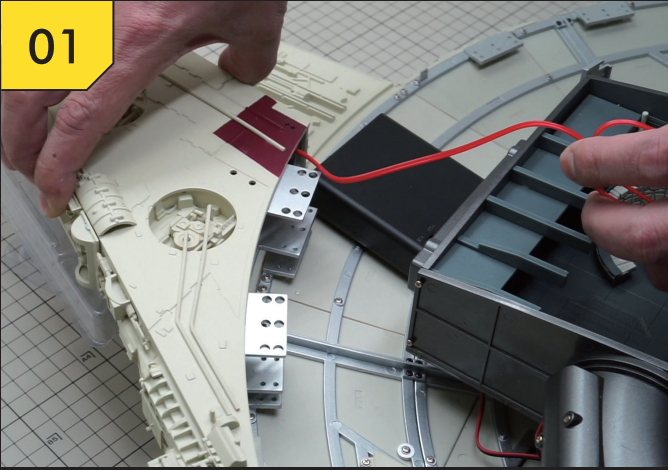


STEP 8:
Place the Mandible Structures as shown in the picture.

ASSEMBLY INSTRUCTIONS - 2

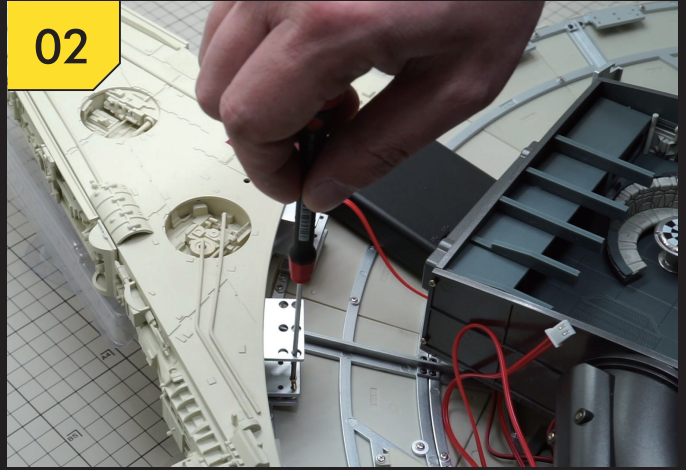
MANDIBLE STRUCTURES ASSEMBLY

01



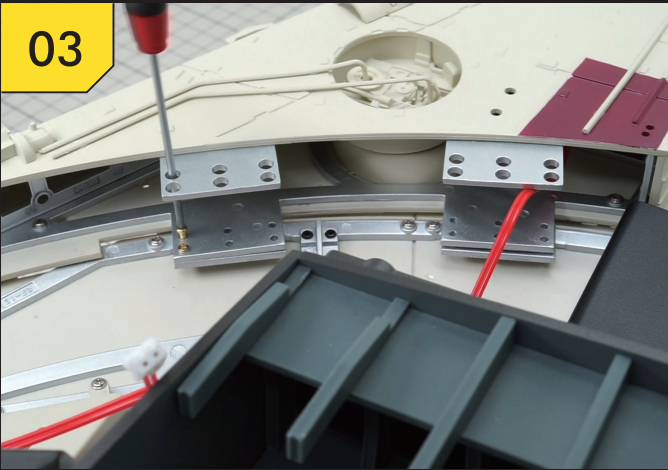
STEP 1:
Place a Blister Shell under the front end of the Mandible Structure and use four Bolts to keep the lower part of the hull the same height as the Mandible Structure.

02



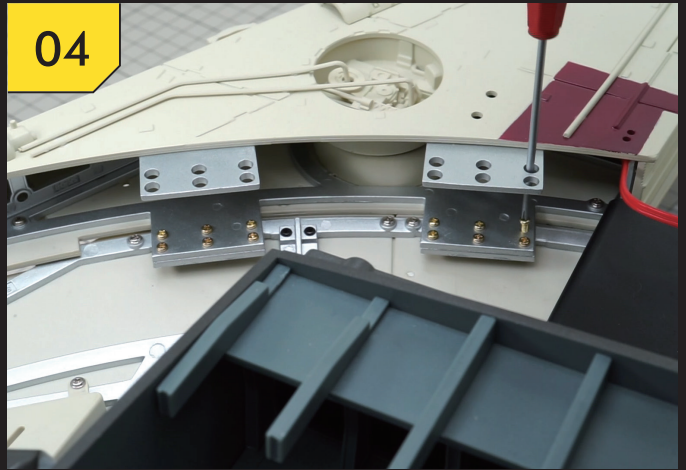
STEP 2:
Align the portside Mandible Structure with the assembling protrusions of the lower part of the hull and use twelve 2.0x6mm screws to secure them.

03



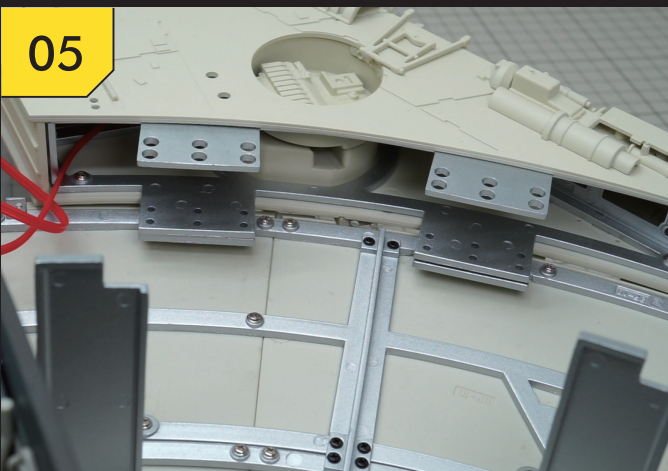
STEP 3:
Pass the tip of the screwdriver through the large hole above the assembling protrusion and insert a 2.0x6mm screw into the screw hole under the assembling protrusion.

04



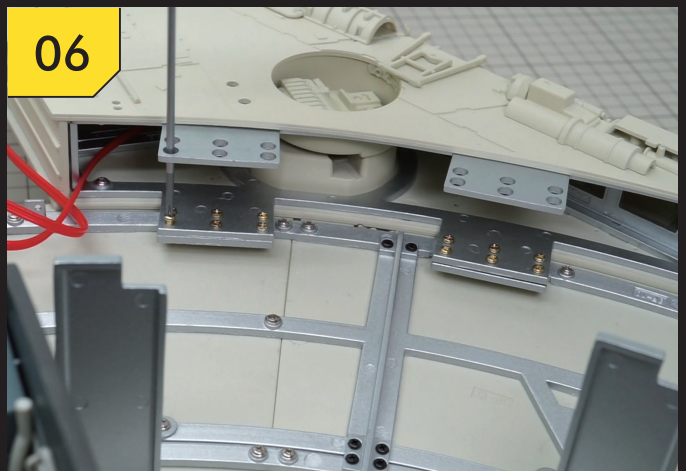
STEP 4:
Lightly fix the screws into the twelve screw holes, then tighten them securely.

05



STEP 5:
Repeat the procedure of Step 2 and prepare to assemble the starboard Mandible Structure to the lower part of the hull.

06

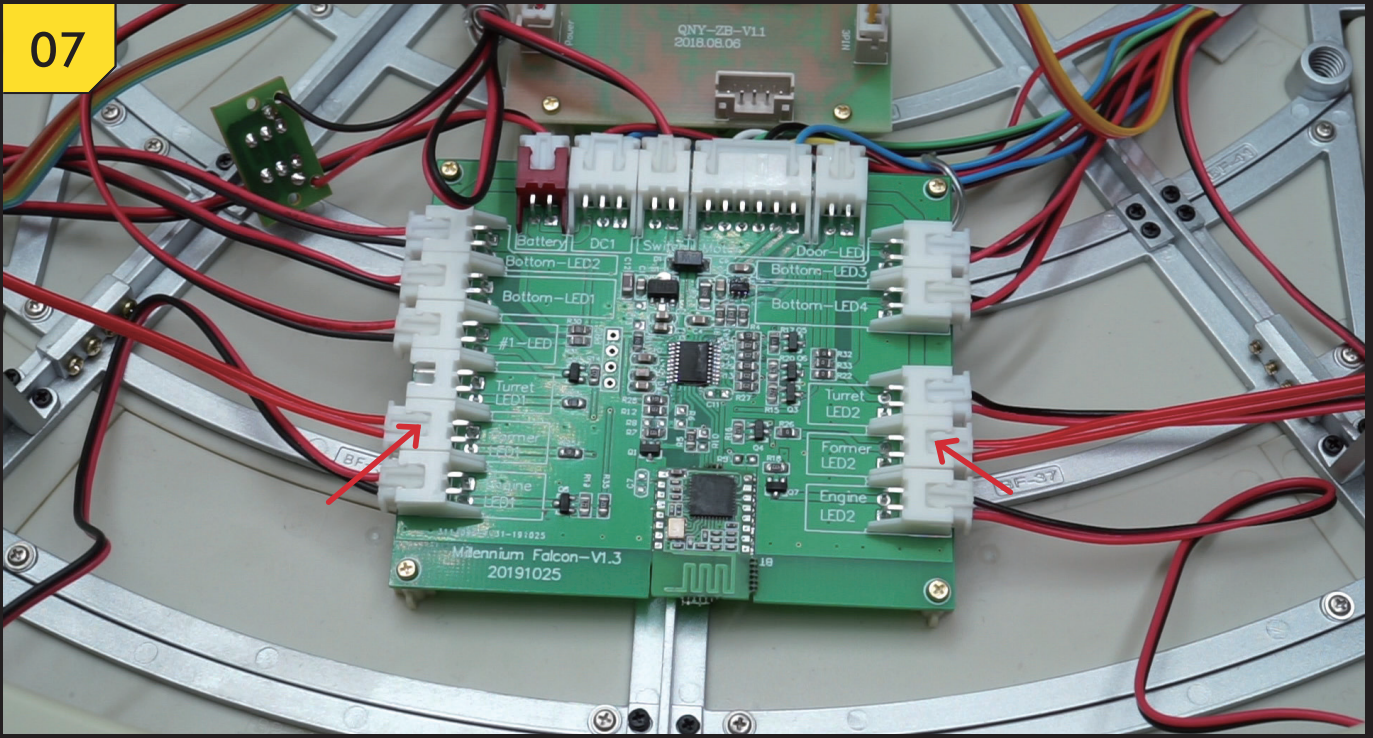


STEP 6:
Repeat Steps 3 and 4 to secure the starboard Mandible Structure with twelve 2.0x6mm screws.

ASSEMBLY INSTRUCTIONS - 2

MANDIBLE STRUCTURES ASSEMBLY

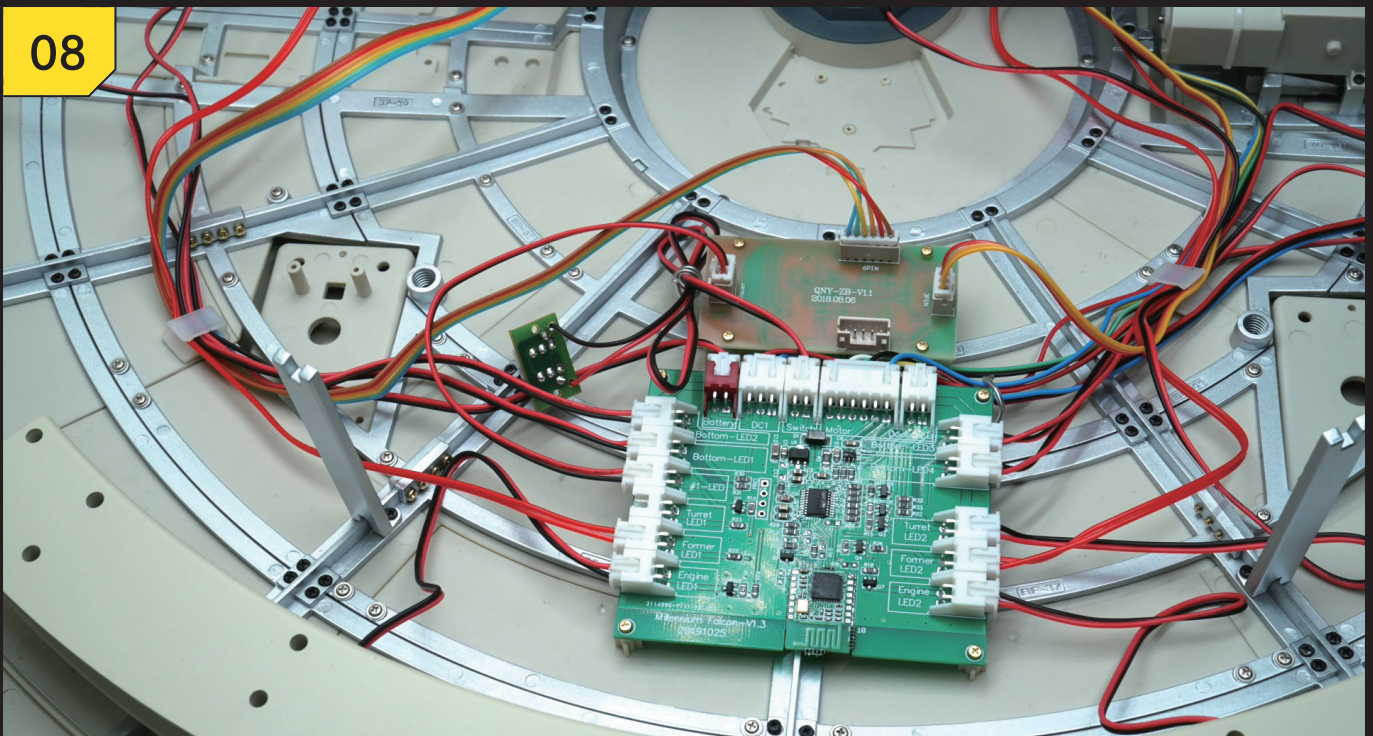
07



STEP 7:

Insert two Headlights of the Mandible Structure into the Fommer LED1 and Fommer LED2 Sockets of the Control Circuit Board respectively.

08



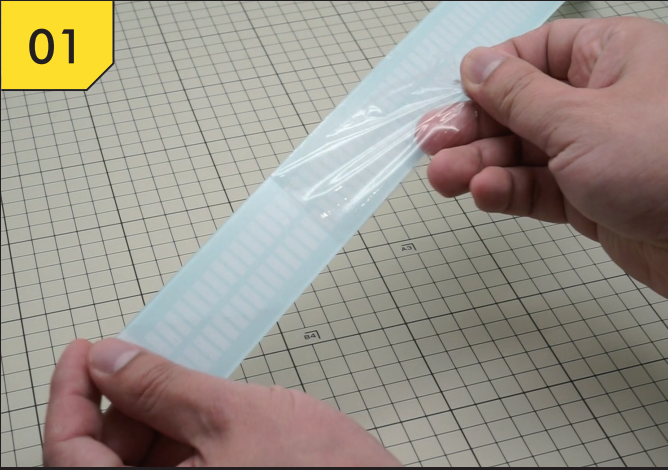
STEP 8:

Snap the two Headlights into the Clips and arrange the wires neatly.

ASSEMBLY INSTRUCTIONS - 2

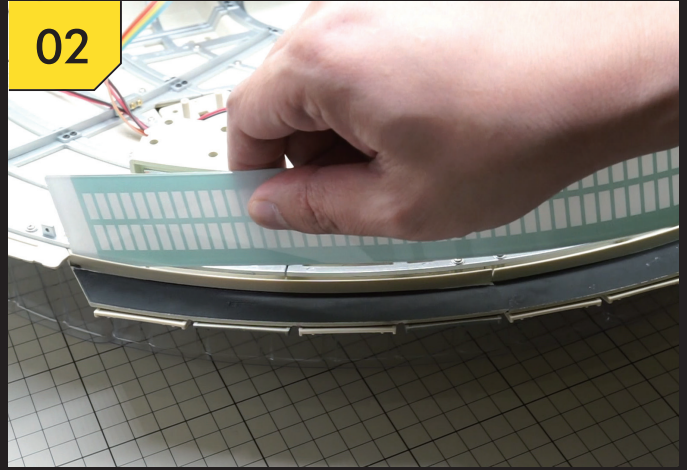
DIFFUSE STRIP ASSEMBLY

01



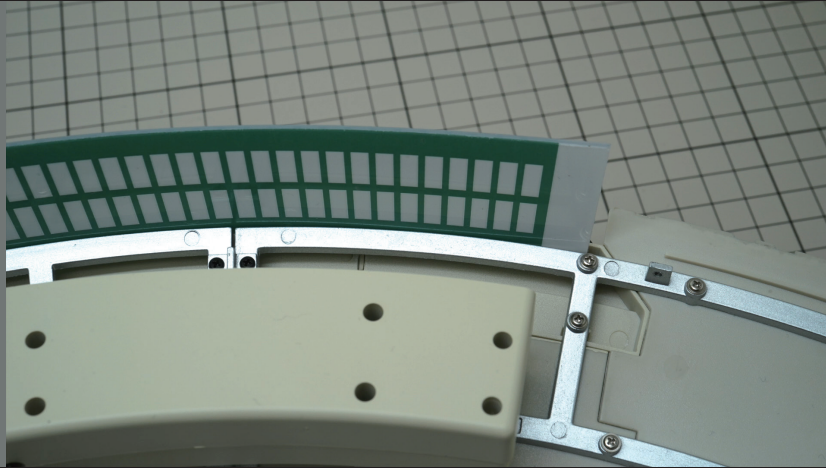
STEP 1:
Carefully peel off the protective film from both sides of the Diffuse Strip.

02



STEP 2:
With the white side facing out, press the Diffuse Strip into the groove of the Armor-Plated Exteriors BP-23, BP-18 and BP-16.

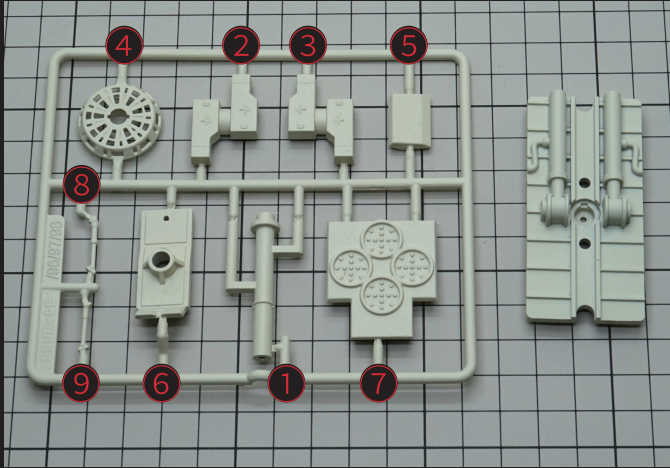
03



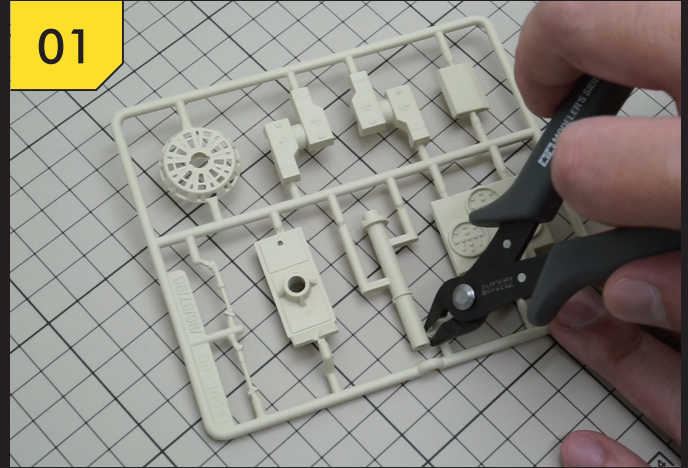
STEP 3:
Fit both ends of the Diffuse Strip to the two ends of the groove as shown in the picture.

ASSEMBLY INSTRUCTIONS - 2

INDEPENDENT UNDERCARRIAGE ASSEMBLY

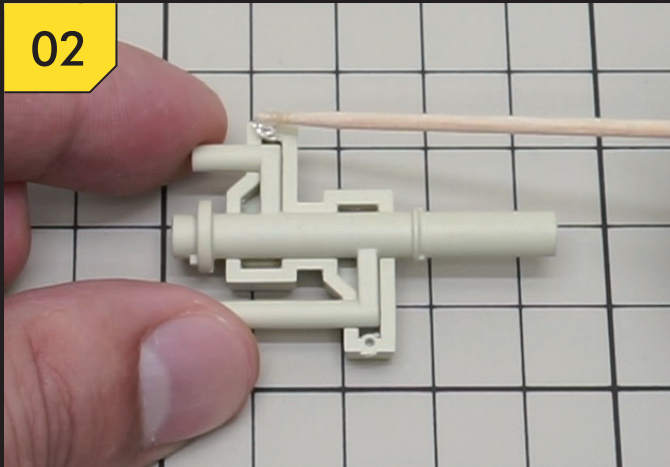


Prepare the Parts of three sets of the Independent Undercarriage.



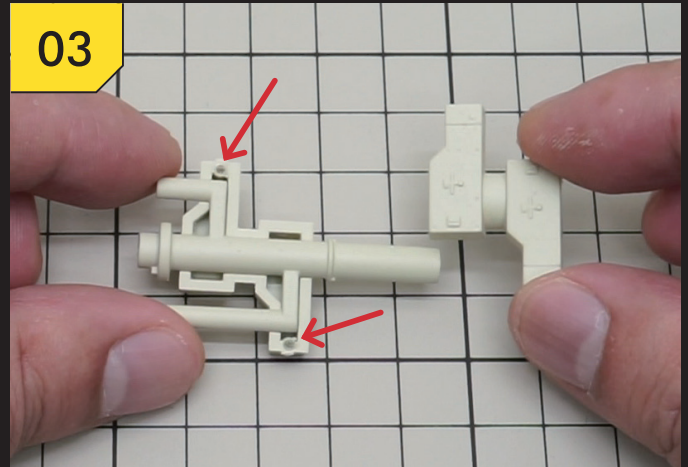
01

STEP 1:
Please snip off the Parts from the frame only when you are about to assemble them.



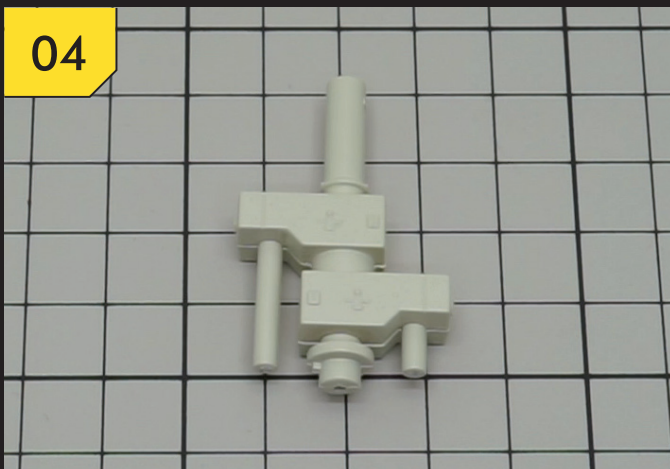
02

STEP 2:
Refer to the picture to assemble ① into the groove of ②.



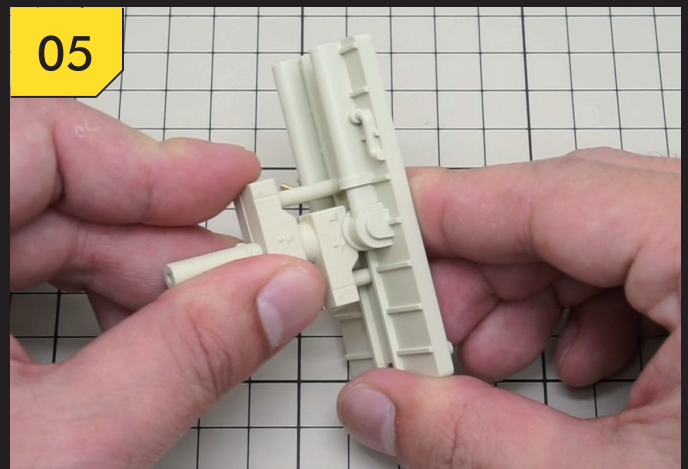
03

STEP 3:
Secure the two tenons of ③ into the small holes of ② (as indicated by the red arrows).



04

STEP 4:
This picture shows the assembled main pillar of the Undercarriage.



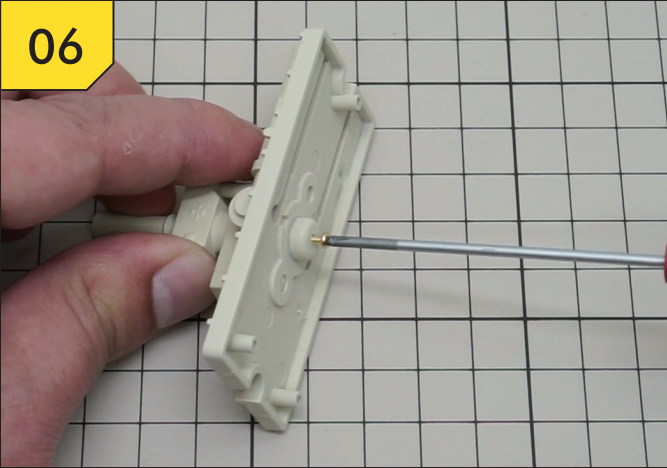
05

STEP 5:
Secure the main pillar of Step 4 to the Undercarriage bracket in the direction shown in the picture.

ASSEMBLY INSTRUCTIONS - 2

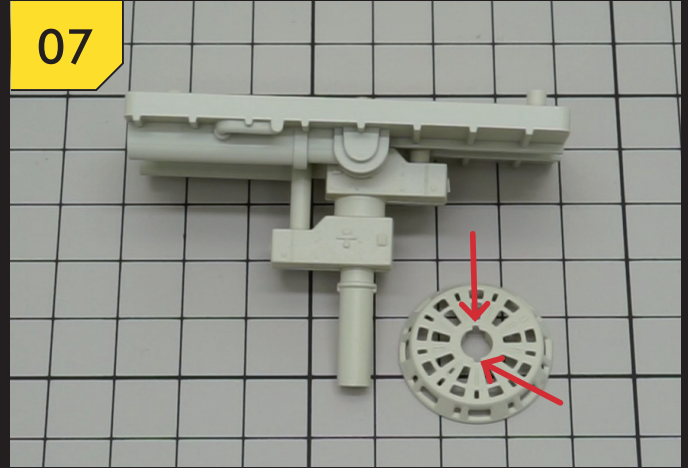
INDEPENDENT UNDERCARRIAGE ASSEMBLY

06



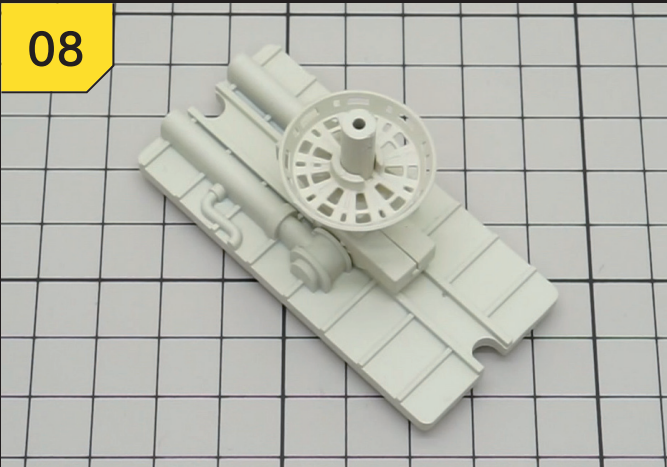
STEP 6:
Secure the main pillar to the Undercarriage bracket with a 1.7x6mm self-tapping screw.

07



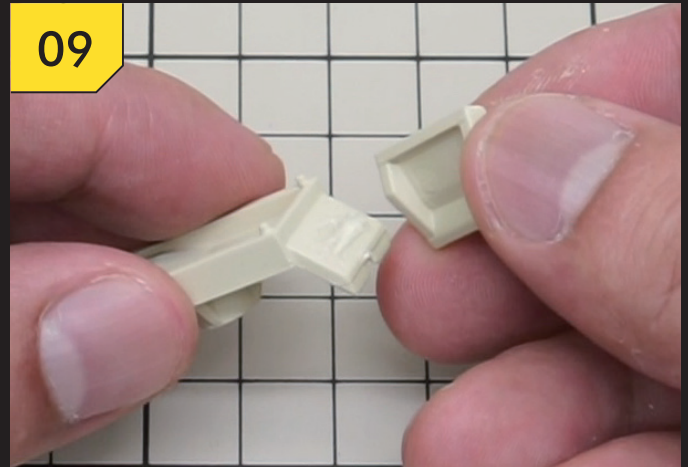
STEP 7:
Secure ④ to the main pillar with the assembly position aligned with the two notches (as indicated by the red arrows).

08



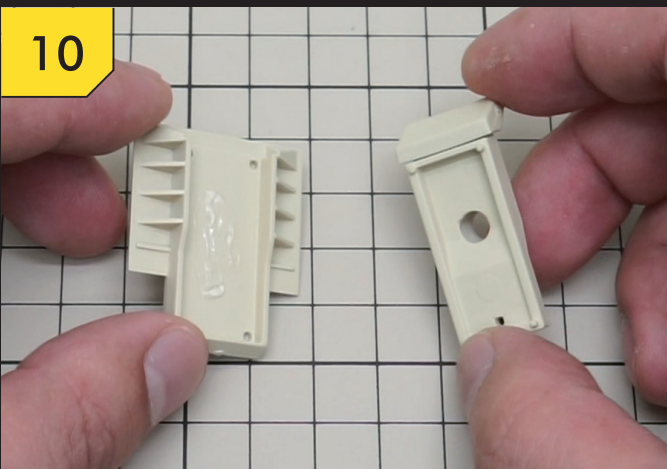
STEP 8:
Assemble the main pillar of ④.

09



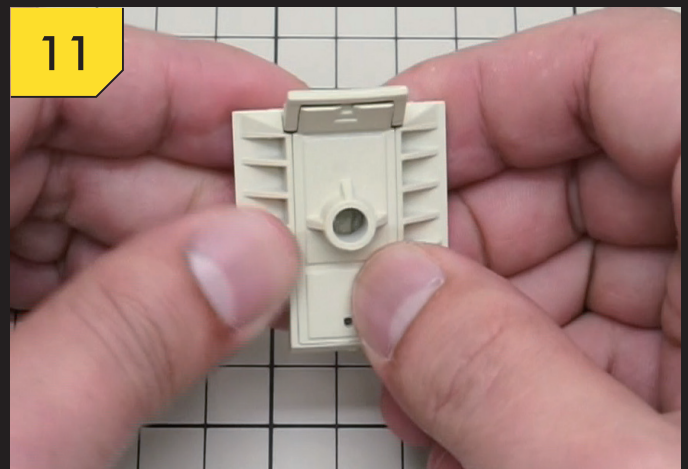
STEP 9:
Refer to the picture to secure ⑤ to the beveled surface at the front end of ⑥.

10



STEP 10:
Identify the tenons at the four corners of the Part assembled in Step 9, align and secure them to the recessed hole of ⑦ to complete the foot of the Undercarriage.

11

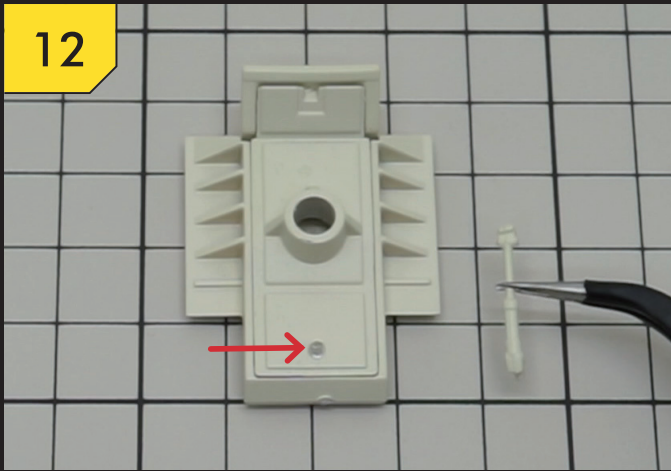


STEP 11:
Check if the Parts of the foot are secured together.

ASSEMBLY INSTRUCTIONS - 2

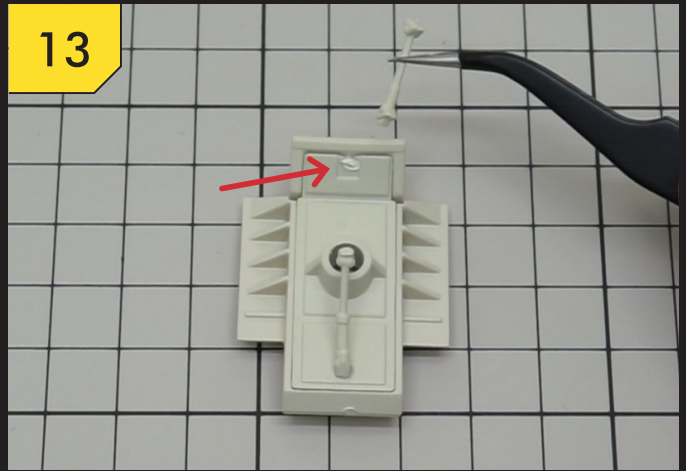
INDEPENDENT UNDERCARRIAGE ASSEMBLY

12



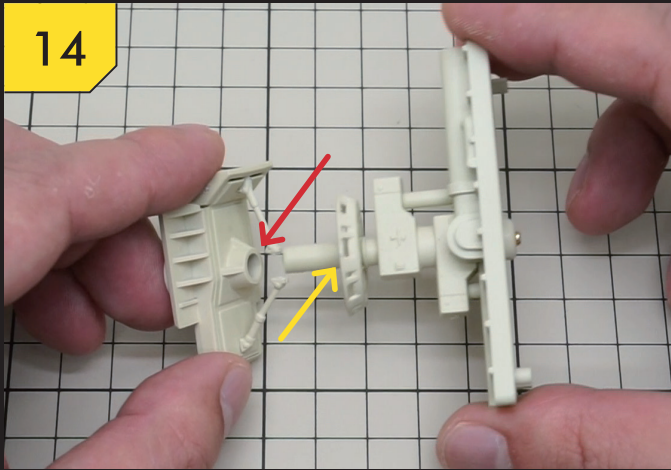
STEP 12:
Refer to the picture to secure the protrusion at the front end of ⑧ into the small hole of the Part assembled in Step 11 (as indicated by the red arrow). Please pay attention to the direction of the Part during assembly.

13



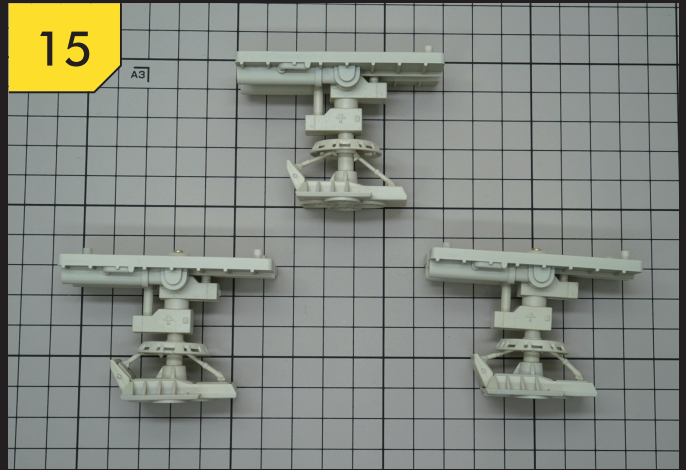
STEP 13:
Refer to the picture and secure the protrusion at the front end of ⑨ to the square recessed hole of the part assembled in Step 11 (as indicated by the red arrow). Please pay attention to the direction of the Part during assembly.

14



STEP 14:
Insert the main pillar into the recessed hole of the foot (as indicated by the red arrow) and assemble the front ends of ⑧ and ⑨ into the notches at the front and back of ④ (as indicated by the yellow arrow).

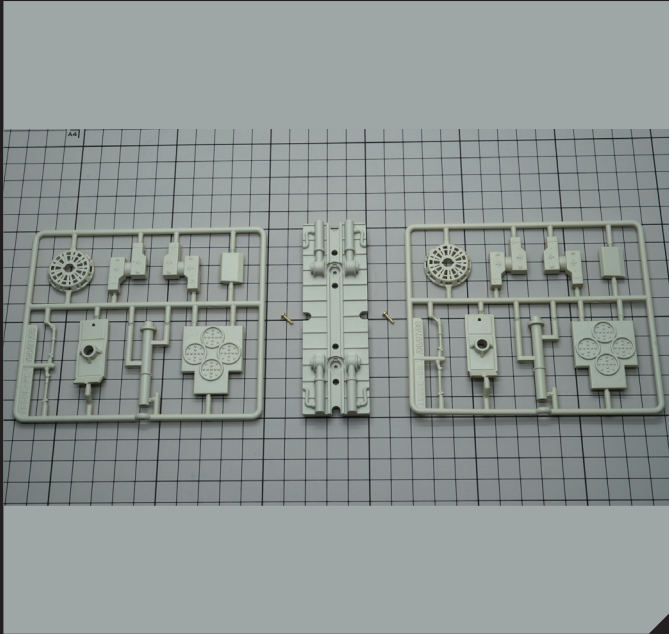
15



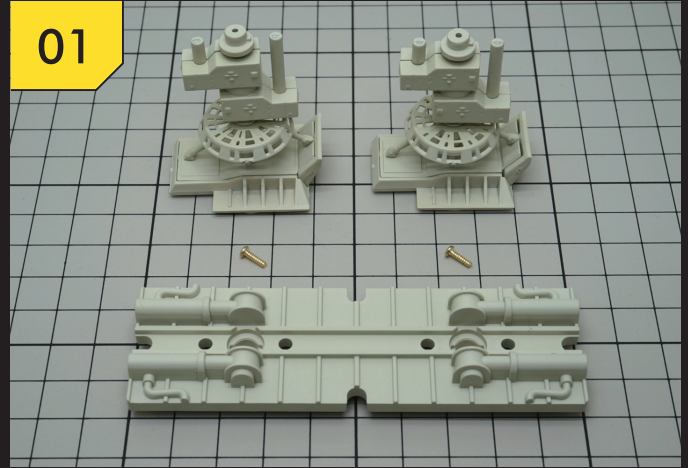
STEP 15:
All three sets of Independent Undercarriage are assembled as shown for future use.

ASSEMBLY INSTRUCTIONS - 2

TWO SETS OF UNDERCARRIAGE ASSEMBLY



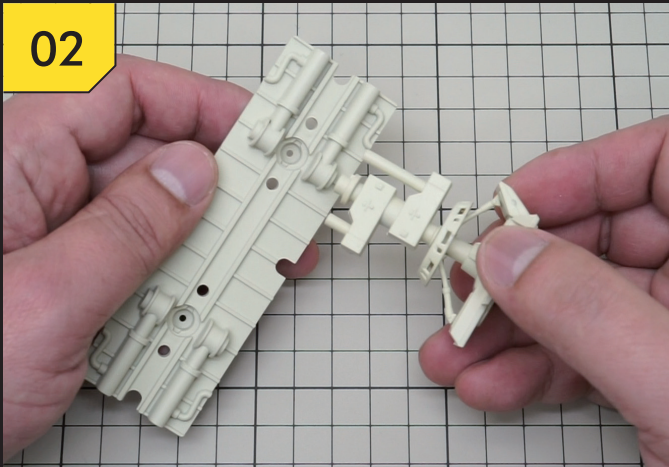
01



STEP 1:

Please refer to Steps 1 to 4 and 7 to 14 from the Independent Undercarriage Assembly to assemble the main Part of the two sets of Undercarriage.

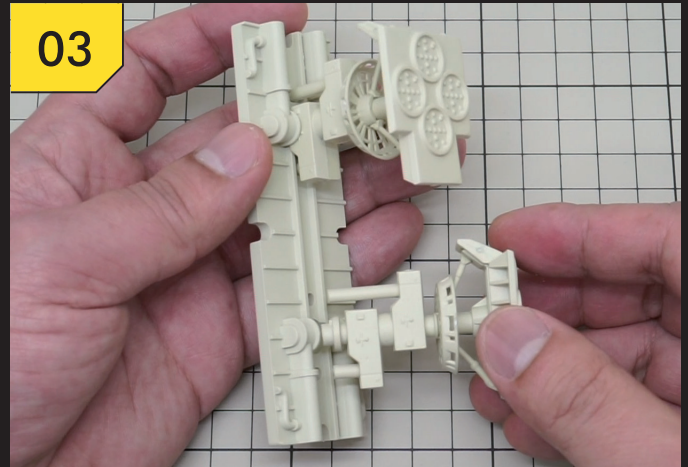
02



STEP 2:

Secure the first main Part of the Undercarriage to the Undercarriage bracket in the direction shown in the picture.

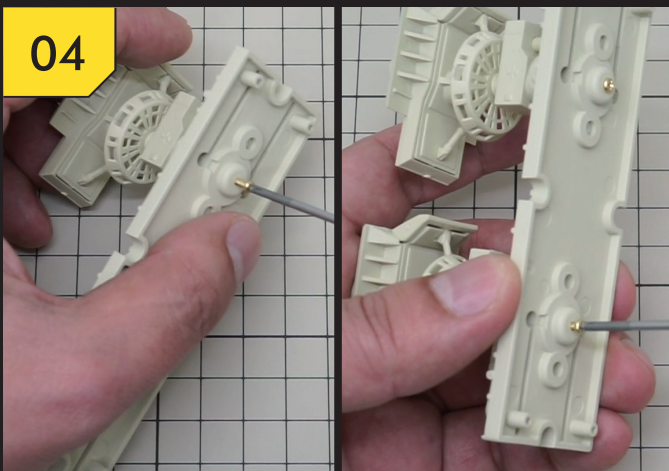
03



STEP 3:

Secure the second main Part of the Undercarriage to the Undercarriage bracket in the same direction.

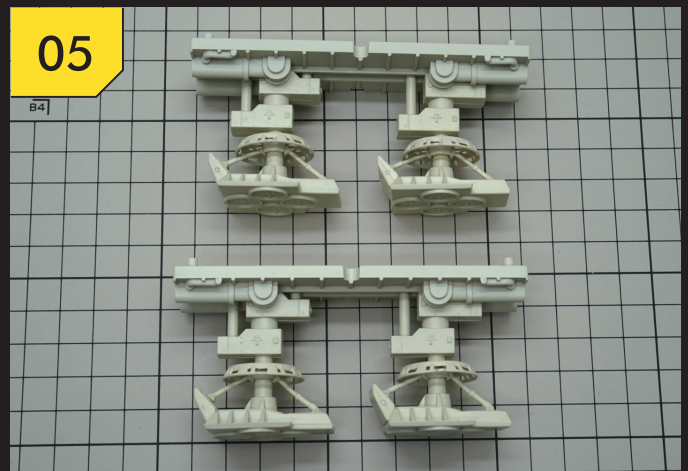
04



STEP 4:

Use two 1.7x6mm self-tapping screws to secure the two main Parts of the Undercarriage to the bracket and assemble another two sets of Undercarriage in the same manner.

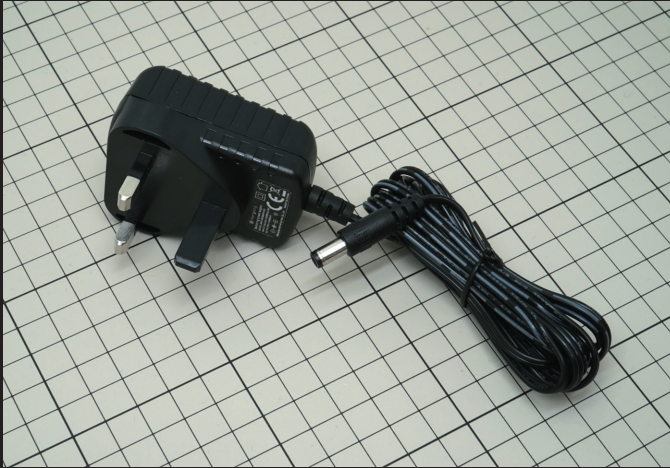
05



STEP 5:

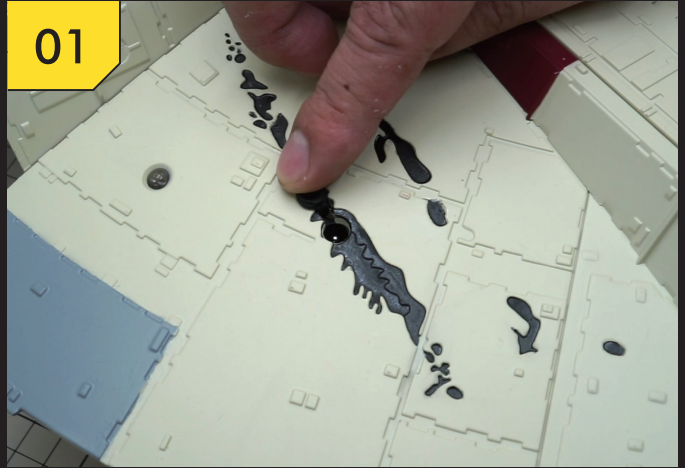
The two sets of Independent Undercarriage are assembled as shown for future use.

POWER ADAPTER USAGE GUIDE



Power Adapter.

01



STEP 1:
Gently open the soft plastic Socket Cover assembled in Issue 8 by hand.

02



STEP 2:
Simply insert the DC plug of the Power Adapter.

PACK 9 ASSEMBLY COMPLETE

